

# CHAMPIONDOOR®

Crane doors



1



With the T-model door, the lower part can be raised separately as an access opening, in which case the heated or cooled air cannot escape the building. This provides obvious savings in energy costs. And when you want to drive the bridge crane out, the whole door is lifted.

2



# CHAMPIONDOOR®

## Crane doors

The openings of bridge cranes are in a bad place in terms of energy economy, ie at the roof line. Traditional crane hatches cannot be closed tightly, energy is consumed and working conditions suffer. Champion Door overhead crane doors are airtight and are specifically designed to eliminate the problems of traditional crane hatches. In the T-model door, the lower part can be used separately as a passage, so that heated or cooled air cannot escape from the building. This provides obvious savings in energy costs. And when you want to drive the bridge crane out, lift the whole door up. The door fabric is always UV-protected and can be delivered with burglary protection or windows, etc. The product selection also includes a comprehensive range of different control options and safety equipment. Crane doors are always tailor-made. The doors have no size limitations.





### MAIN FEATURES

- 2-fabric fold-up fabric lift door
- wind load resistance= wind classes 2-5
- with additional thermal insulation, U-value up to 0.57 W / (m<sup>2</sup> • K) (EN12428)
- opening speed = 0.16... 0.5 m / s
- PVC fabric weight 900g / m<sup>2</sup>



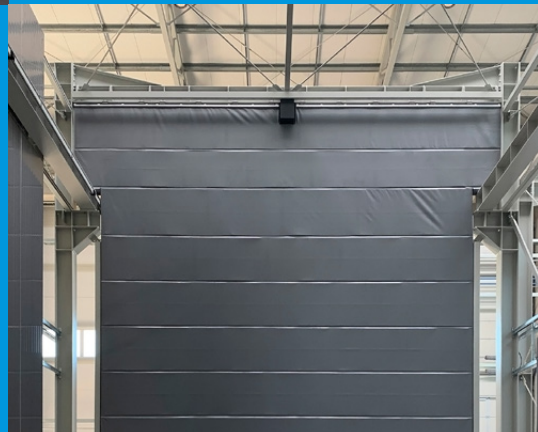
### COLOR OPTIONS

- Standard colors:  
white, light gray, gray, blue
- Custom colors:  
red, yellow, light blue,  
dark blue, green, dark green,  
matte red, black and translucent



### OPTIONAL

- vision panels
- additional thermal insulation
- soundproof fabric
- burglar-resistant door fabric
- translucent fabric
- special door fabrics for extreme temperatures - 60 °... + 200 °
- radio control
- door control from an external source
- warning devices (audio signal and flashing lights)



### SPECIAL EQUIPMENT

- ATEX features for potentially explosive premises
- hydraulic emergency opening function
- SRC remote control



### KEY ADVANTAGES

- no thresholds or rails on the floor
- lighter construction - lower construction costs
- reliable in demanding conditions
- excellent wind load resistance
- long lifetime
- low life cycle costs
- low maintenance costs
- good corrosion resistance
- compact construction
- low power consumption



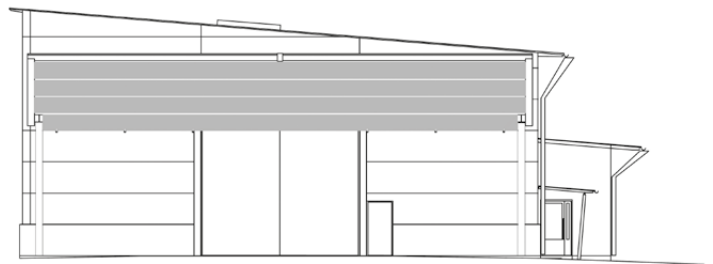
## TECHNICAL SPECIFICATIONS AND ACCESSORIES

### MAIN FEATURES

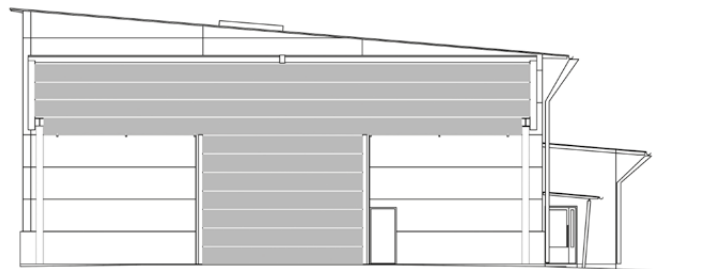
U value	With additional thermal insulation, up to 0.57 W / (m <sup>2</sup> • K) (EN12428)
Wind load resistance	Wind classes 2-5
Maximum door size	No size limit
The control system	Electronic and programmable (s)
Control	3-button control (s)
	Impulse control (o)
	Radio control (o)
	Traction control (o)
	Radar control (o)
	Induction loop control (o)
Safety equipment	Fall arresters (s)
	Impact sensor in bottom beam (o)
	Wind locks (o)
	Photocell (o)
	Laser light curtain (o)
Optional	Windows (o)
	Additional thermal insulation (o)
	Soundproof insulation (o)
	Burglar resistant fabric (o)
	Hydraulic emergency opening (o)
	Touch screen operation (o)
	Secure remote control SRC (o)

(s) = standard (o) = optional

### Crane door models:



Basic model in which the top opens that the crane can be driven out.



T-model, where the middle part can be used as a passage opening, and when fully raised, the crane can be driven out.

## Maintenance

Champion Door conducts warranty-based annual maintenance and safety inspections in accordance with a separate maintenance program. Call for more info!

# CHAMPIONDOOR®

Champion Door Oy

Head office / Factory, Hopeatie 2, FI-85500 Nivala, Finland, Phone +358 8 445 8800, info@championdoor.com

Champion Door France, 55 avenue de Colmar, 92500 Rueil Malmaison, Tél +33 147 202 314, france@championdoor.com

Liaison Office UAE, B.O. Box 263038, Dubai, UAE, Tel. +971 488 103 31, uae@championdoor.com

Branch Office US, Champion Door, 5718 Westheimer, Suite 1000, Houston TX 77057, Tel (713)-352-0403, us@championdoor.com

[www.championdoor.com](http://www.championdoor.com)